

The sale of the Temple Cowley Pools site offers a fantastic opportunity for the Council to work with the community to make better use of publicly owned land through an exciting and innovative development, providing an immediate and continuing financial return, and delivering a long-lasting legacy to the community of East Oxford that will energise an area that has seen a gradual decline in services and facilities over the last twenty years.

Since it is now public knowledge that the SaveTCP consortium is bidding for the Temple Cowley site, I thought Council would be interested in learning more about our plans.

The SaveTCP consortium comprises a broad spectrum of the community, from professional architects and engineers through to committed users of the current Temple Cowley Pools & Fitness Centre, as well as local artists, and will work closely with Oxford City Council to ensure a successful and viable development of the site.

The huge groundswell of opinion to retain health and fitness facilities at Temple Cowley is well-known through the activities of the Save Temple Cowley Pools Campaign, who delivered the largest ever petition in the history of Oxford to the City Council in 2010, and since then have demonstrated continuing massive popular support from across Oxford through a series of petitions, the seventh of which is being debated later this evening.

Oxford City Council is committed to “building a world class city for everyone”, and this special self-funding project returns much more than simply cash – by selecting our community development you will actively help develop much-needed facilities in a centre of areas of deprivation, support improving the health and well-being of target demographics such as young people, support maintaining the independence of groups such as the disabled, elderly and infirm, as well as achieving an initial and continuing financial return in the face of savage budget cuts from central government.

We will transform the current site, delivering:

- An empathetic development of approximately 30 housing units, over 50% of which will be for affordable housing, but including a number of luxury apartments with ‘dreaming spires’ views across the centre of Oxford
- A unique ‘castle in the air’ community space offering year-round activities for all members of local Cowley community, and available to all across East Oxford and beyond
- A café adjacent to the gym and a catering area in the community space
- Remodelling of health and fitness facilities on the ground floor, comprising:
  - 25m competition swimming pool
  - Diving pool

- Dance and Exercise studio
- Sauna and steam room
- Gym

The low-carbon housing will encourage increased public transport use yet maintain car parking for access to the health and fitness facilities and retain the required access for the adjacent library. Simply through re-using the existing building we are reducing 'capital' carbon emissions from demolition and rebuilding, as well as lowering remediation costs. The low-carbon theme continues into the health and fitness centre, building on its record of the most energy-efficient amongst council leisure centres through features such as green roof, green walls, rainwater harvesting, seasonal heat exchange, low-cost CHP, PV provision and the opportunity to be part of a local energy-generation network.

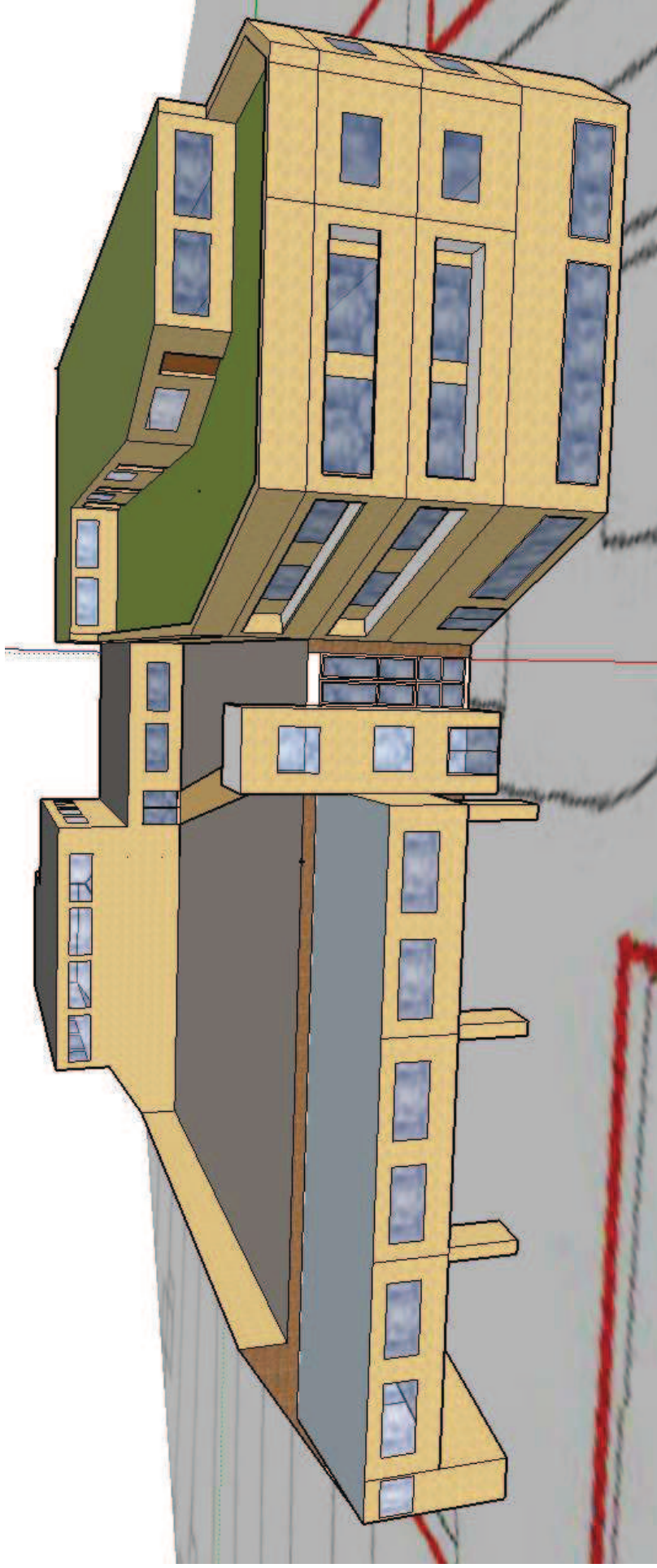
The existing centre will provide a focus for the redevelopment; the huge increase in population of the Temple Cowley and Cowley Marsh areas over the last decade is set to continue over the next twenty years, and this growth demands both a community centre and health, fitness and leisure facilities that are easily accessible. Designated by the City Council as both a primary district centre and a transport hub, this site's location is ideal to fulfil the growing and continuing need for these services.

These exciting facilities complement what is already on offer in the local area and assist in mitigating the loss of others; the adjacent library and public records office, and the retail centres at Templars Square and the John Allen centre combine with the new development to provide a comprehensive leisure opportunity, while the new community space will help replace facilities lost through the redevelopment of the Barns Road community centre.

A key factor in the project is community inclusion at all stages – listening and responding to the public is vital to ensure facilities match what people want and need. And by inviting local artists to the consortium we offer the opportunity to continue the link with the existing and much-loved murals and design inside the current building.

This unique development is an exciting and innovative project that delivers for the community in a way that is both inclusive and financially viable. We look forward to working with Oxford City Council to realise the aspirations and needs of the people of East Oxford, and hope that councillors will support both this project and their voters in debating the petition from the Save Temple Cowley Pools Campaign this evening.





*The images show initial design considerations; the core health & fitness centre building remodelled and extended to incorporate on right-hand side reception/gym/cafe (ground floor), housing on 1<sup>st</sup>/2<sup>nd</sup> floors with 3<sup>rd</sup> floor combining housing and garden roof space. Elevated housing at front to retain car parking, and lift/staircase leading across to community space over existing diving pool area.*